

Pitagora




Nk

Cr

Struttura in ottone vetro pirex.
Brass structure, pirex glass. Messingstruktur, Pirex Glas.



 Base parete

PT35 I

☞ R7s 78mm 120W
L 230 x Sp. 130 x H 45

PT45 I

☞ R7s 118mm 160W
L 280 x Sp. 130 x H 45

 Attacco staffa

PT33 I

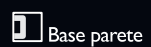
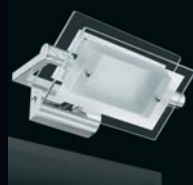
☞ R7s 78mm 120W
L 230 x Sp. 130

PT43 I

☞ R7s 118mm 160W
L 280 x Sp. 130



Struttura in ottone, vetro sabbiato bordo trasparente.
Brass structure, tempered glass satin-transparent.
Messingstruktur, sandgestraht Glas klar im Vorteil.



Base parete



Attacco staffa



Soffitto

PT151

R7s 78mm 120W
L 180 x Sp. 145 x H 90

PT251

R7s 118mm 160W
L 235 x Sp. 185 x H 115

PT851

R7s 118mm 160W
L 280 x Sp. 200 x H 145

PT131

R7s 78mm 120W
L 180 x Sp. 145 x H 45

PT231

R7s 118mm 160W
L 235 x Sp. 185 x H 45

PT843

R7s 118mm 160W
L 280 x H 345