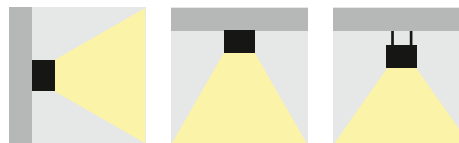


WALL & CEILING MOUNTING WITH SUSPENDED LEGEND LEDLUX2-R



← 30m →



- Modern design orientated **surface mounted LED** non-maintained/maintained (NM/M) or centralised (C) emergency lighting with smooth legend illumination for all **areas such as offices, shops, hotels, banks, entrance halls, schools, hospitals, etc.**
- It is equipped with the joint allowing to install the fixture either on the wall or ceiling without any additional bracket
It is available in all following versions:
 - **AUTOTEST** (-AT)
 - **DALI**
 - **CENTRALTEST** (-ATXL) for **ELMAX LOOK** system (look up also page No.36)
 - **Wireless CENTRALTEST** (-ATRF) for **ELMAX Wireless** system (page No.38)
 - **CENTRAL BATTERY** (C.LEDLUX-R) for **non-addressable CBS** (look up also page No.44)
 - **CENTRAL BATTERY** (-ATXP) for system **ELMAX-PATROLUX & Addressable CBS** (look up also page No.40)
- Legend luminance $>500\text{cd/m}^2$ (white)
- Conforming to the requirement of EN60598-2-22, EN1838, EN62034
- Design: AL extruded profile body & die-casted end caps, all with PE powder coat finish RAL9006 (grey), RAL9003 (white) or RAL9005 (black)

- Elegantly LED svietidlá pre **netrvalé/trvalé (NM/M)** alebo **centrálne (C)** núdzové osvetlenie s perfektnou rovnomernosťou osvetlenia piktogramu navrhnuté pre **všeobecné použitie priestorov** ako napr. kancelárie, obchody, školy, nemocnice, vstupné haly, banky a pod.,
- Svetidlo je vabavené otočným kĺbom, ktorý dovoľuje inštaláciu na strop alebo kolmu stenu bez potreby dodatočnej konzoly

- Verzie s funkciami:
 - **AUTOTEST** (-AT)
 - **DALI**
 - **CENTRALTEST** (-ATXL) pre systém ELMAX LOOK (pozri str.36)
 - **bezdrôtový CENTRALTEST** (-ATRF) pre ELMAX Wireless systém (pozri str.38)
 - **CENTRAL BATTERY** (C.LEDLUX-R) pre **neadresovateľné CBS** (pozri str.44)
 - **CENTRAL BATTERY** (-ATXP) pre systém **ELMAX-PATROLUX s adresovateľnou CBS** (pozri str. 40)
- spĺňa požiadavky európskej normy EN 60598-2-22, EN1838, EN62034
- Jas piktogramu $>500\text{cd/m}^2$ (white)
- konštrukcia: teleso z extrudovaného AL profilu, čelá AL odliatky - vo farbe RAL9006 (šedá), RAL9003 (biela) alebo RAL9005 (čierna)

STANDARD FEATURES

STANDARDNÁ VÝBAVA

- **High efficient MidPower (150lm/W, 5000K) LONGLIFE LEDs (>100.000h)**
- **NEW Advanced Electronics**
- **LONGLIFE LiFePo4 battery**
- **Installation Mode** (battery protection, for more details look up page No.51+122)
- **Intelligent battery charging** (intermittent charging, look up page No.51+122)
- **DIP Switch** allowing to preset following functions:
 - **ECO Mode** (dimming 10%-100%, for more details look up page No.51+122)
- Addressable CENTRALTEST communication module (for ATXL, ATXP, ATRF only)
- LEDs indicating presence of power supply and signaling failures & TEST button
- **vysoko účinné MidPower LED (150lm/W, 5000K) so životnosťou min.100000h**
- **progresívna elektronická jednotka**
- **LONGLIFE LiFePo4 batéria**
- **Inštaláčny mód** (ochrana batérie, pozri aj str.51+122)
- **Inteligentné nabíjanie batérie** ("intermittent" nabíjanie, pozri aj str.51+122)
- **DIP prepínač** umožňujúci prednastavenie funkcií:
 - **ECO Mód** (stmievanie 10%-100%, pozri aj str.51+122)
- adresovateľný CENTRALTEST komunikačný modul (len pre ATXL, ATXP, ATRF verzie)
- signalizácia LED a TEST tlačítko

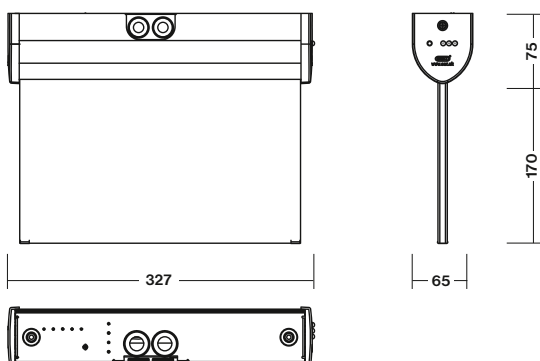
OPTIONAL ACCESSORIES

PRÍPLATKY

- **Special suspended plexi with layered design for perfect uniform illumination of legend - must be ordered as a separate item (look up also page No.122)**
- Wire rope suspension set (look up also page No.123)
- Alternative colour surface treatment in RAL (min order quantity 100pcs)
- **špeciálne vrstvené závesné plexi pre rovnomerné osvetlenie piktogramu na jeho celej ploche (plexi musí byť objednané samostatne podľa želaného piktogramu- pozri aj str.122)**
- lanková závesná sada (pozri aj str.123)
- povrchová úprava vo farbe podľa špecifikácie odberateľa (min obj.100ks)



← 30m →



WALL & CEILING MOUNTING WITH SUSPENDED LEGEND LEDLUX2-R



RAL9005
Surface Treatment



RAL9006
Surface Treatment



RAL9003
Surface Treatment

Page No.32

AUTOTEST -AT NM/M

Type	Version	Colour	Light Source	Duration	Battery	Order Code	Weight
MULTILED2-R-AT.3h RAL9006	Only Body, No Plexi incl.	Grey / šedá	MidPower LEDs	3h	LiFePo4 6,4V/1Ah	331-B-001-04-00-01	1,3 kg
MULTILED2-R-AT.3h RAL9003	Only Body, No Plexi incl.	White / biela	MidPower LEDs	3h	LiFePo4 6,4V/1Ah	331-B-001-04-00-02	1,3 kg
MULTILED2-R-AT.3h RAL9005	Only Body, No Plexi incl.	Black / čierna	MidPower LEDs	3h	LiFePo4 6,4V/1Ah	331-B-001-04-00-03	1,3 kg

DALI SELF-CONTAINED

Type	Version	Colour	Light Source	Duration	Battery	Order Code	Weight
MULTILED2-R-DALI.3h RAL9006	Only Body, No Plexi incl.	Grey / šedá	MidPower LEDs	3h	LiFePo4 6,4V/1Ah	331-B-002-04-00-01	1,2 kg
MULTILED2-R-DALI.3h RAL9003	Only Body, No Plexi incl.	White / biela	MidPower LEDs	3h	LiFePo4 6,4V/1Ah	331-B-002-04-00-02	1,2 kg
MULTILED2-R-DALI.3h RAL9005	Only Body, No Plexi incl.	Black / čierna	MidPower LEDs	3h	LiFePo4 6,4V/1Ah	331-B-002-04-00-03	1,2 kg

Page No.36

CENTRALTEST -ATXL ELMAX-LOOK

Type	Version	Colour	Light Source	Duration	Battery	Order Code	Weight
MULTILED2-R-ATXL.3h RAL9006	Only Body, No Plexi incl.	Grey / šedá	MidPower LEDs	3h	LiFePo4 6,4V/1Ah	331-B-003-04-00-01	1,4 kg
MULTILED2-R-ATXL.3h RAL9003	Only Body, No Plexi incl.	White / biela	MidPower LEDs	3h	LiFePo4 6,4V/1Ah	331-B-003-04-00-02	1,4 kg
MULTILED2-R-ATXL.3h RAL9005	Only Body, No Plexi incl.	Black / čierna	9xMidPower LEDs	3h	LiFePo4 6,4V/1Ah	331-B-003-04-00-03	1,4 kg

Page No.38

Wireless CENTRALTEST ELMAX-ATRF

Type	Version	Colour	Light Source	Duration	Battery	Order Code	Weight
MULTILED2-R-ATRF.3h RAL9006	Only Body, No Plexi incl.	Grey / šedá	MidPower LEDs	3h	LiFePo4 6,4V/1Ah	331-B-004-04-00-01	1,3 kg
MULTILED2-R-ATRF.3h RAL9003	Only Body, No Plexi incl.	White / biela	MidPower LEDs	3h	LiFePo4 6,4V/1Ah	331-B-004-04-00-02	1,3 kg

Page No.44

CENTRAL BATTERY (CBS)

Type	Version	Colour	CBS Version for	Light Source	Order Code	Weight
C.LEDLUX2-R 230V AC/DC	Only Body, No Plexi incl.	Grey / šedá	CBS NON-ADDRESSABLE	MidPower LEDs	331-B-005-00-00-01	1,0 kg
C.LEDLUX2-R 230V AC/DC	Only Body, No Plexi incl.	White / biela	CBS NON-ADDRESSABLE	MidPower LEDs	331-B-005-00-00-02	1,0 kg
C.LEDLUX2-R 230V AC/DC	Only Body, No Plexi incl.	Black / čierna	CBS NON-ADDRESSABLE	MidPower LEDs	331-B-005-00-00-03	1,0 kg
C.LEDLUX2-R 24V AC/DC	Only Body, No Plexi incl.	Grey / šedá	CBS NON-ADDRESSABLE	MidPower LEDs	331-B-006-00-00-01	1,0 kg
C.LEDLUX2-R 24V AC/DC	Only Body, No Plexi incl.	White / biela	CBS NON-ADDRESSABLE	MidPower LEDs	331-B-006-00-00-02	1,0 kg

DALI CENTRAL BATTERY (CBS)

Type	Version	Colour	CBS Version for	Light Source	Order Code	Weight
C.LEDLUX2-R-DALI 230V AC	Only Body, No Plexi incl.	Grey / šedá	DALI CBS	MidPower LEDs	331-B-007-00-00-01	1,0 kg
C.LEDLUX2-R-DALI 230V AC	Only Body, No Plexi incl.	White / biela	DALI CBS	MidPower LEDs	331-B-007-00-00-02	1,0 kg
C.LEDLUX2-R-DALI 230V AC	Only Body, No Plexi incl.	Black / čierna	DALI CBS	MidPower LEDs	331-B-007-00-00-03	1,0 kg

Page No.40

Addressable CENTRAL BATTERY (CBS) -ATXP ELMAX-PATROLUX

Type	Version	Colour	CBS Version for	Light Source	Order Code	Weight
C.LEDLUX2-R-ATXPR 230V AC/DC	Only Body, No Plexi incl.	Grey / šedá	CBS ADDRESSABLE	MidPower LEDs	331-B-008-00-00-01	1,1 kg
C.LEDLUX2-R-ATXPR 230V AC/DC	Only Body, No Plexi incl.	White / biela	CBS ADDRESSABLE	MidPower LEDs	331-B-008-00-00-02	1,1 kg

LEDLUX2-R

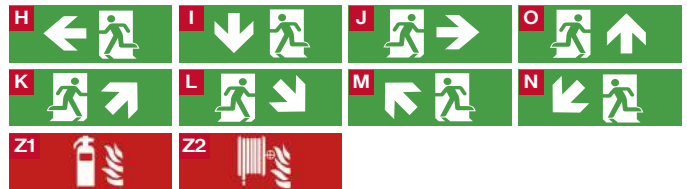


• It is not included in standard package. It must be ordered as separate item !

- Viewing Distance: 30m
- Complying ISO7010
- Legend luminance >500cd/m² (white)

• nie je súčasťou štandardného balenia svietidla, musí byť objednané ako samostatná položka !

- rozoznatelnosť piktogramu: 30m
- v súlade s ISO7010
- jas piktogramu >500cd/m² (biela)



Plexi Legend / plexi s pikto

Optional Item	Order Code
Double sided plexi H/J / obojstranné pikto H/J	309-B-000-00-00-01
Double sided plexi I / obojstranné pikto I	309-B-000-00-00-02
Single sided plexi H / jednostranné pikto H	309-B-000-00-00-03
Single sided plexi I / jednostranné pikto I	309-B-000-00-00-04
Single sided plexi J / jednostranné pikto J	309-B-000-00-00-05
Double sided plexi K/M / obojstranné pikto K/M	309-B-000-00-00-06
Double sided plexi L/N / obojstranné pikto L/N	309-B-000-00-00-07
Single sided plexi K / jednostranné pikto K	309-B-000-00-00-08
Single sided plexi L / jednostranné pikto L	309-B-000-00-00-09
Single sided plexi M / jednostranné pikto M	309-B-000-00-00-10
Single sided plexi N / jednostranné pikto N	309-B-000-00-00-11
Double sided plexi O / obojstranné pikto O	309-B-000-00-00-13
Double sided plexi Z1 / obojstranné pikto Z1	309-B-000-00-00-27
Double sided plexi Z2 / obojstranné pikto Z2	309-B-000-00-00-28



DIP SWITCH FEATURES No.1-4 DIP PREPÍNAČ č.1-4 : FUNKCIE

SELF-CONTAINED BATTERY VERSIONS

NORMAL MODE
230V MAINS

EMERGENCY MODE
BATTERY



ESCAPE SIGN Brightness in 230V
OFF = 100%
BRIGHTNESS > 200cd/m²

ECO MODE 10% (in 230V Mode)
ON = 10%
BRIGHTNESS > 2cd/m²

INSTALLATION MODE
SET UP

DEFAULT SETTING / PREDNASTAVENÉ
OFF - ACTIVATED
ON - DEACTIVATED

M / NM
NON-MAINTAINED / MAINTAINED MODE
SET UP

DEFAULT SETTING / PREDNASTAVENÉ
OFF - NON-MAINTAINED

AT / ATXL
AUTOTEST / CENTRALTEST MODE
SET UP

DEFAULT SETTING / PREDNASTAVENÉ
OFF - AUTOTEST
ON - CENTRALTEST

TO SEE THE CHANGE PUSH EITHER TEST BUTTON OR DISCONNECT THE FIXTURE FROM BOTH THE MAINS 230V AND BATTERY

Po prestavení stlačte TEST alebo odpojte batériu a 230V napájanie na aktiváciu zmeny

JUMPER FEATURES

CBS CENTRAL BATTERY VERSIONS

There is L1' logical input which allows to control the dimming function of the fixture by presence of 230V on L1'. During the first installation you can preset DIM level either 50% or 40% or 30% or 20% or 10%. The advantage of dimming feature is either energy saving or brightness reduction in e.g.cinema or theatre application.

Svietidlo je vybavené logickým vstupom L1', ktorým je ovládané stmievanie svietidla. Počas prvej inštalácie je možné nastaviť úroveň stmievania na 50% alebo 40% alebo 30% alebo 20% alebo 10%. Táto funkcia prispieva k zníženiu spotreby elektrickej energie alebo môže byť s výhodou použitá v kinách / divadlách, kde je počas predstavenia nežiadúci vysoký jas piktogramu.

Logic of Dimming:

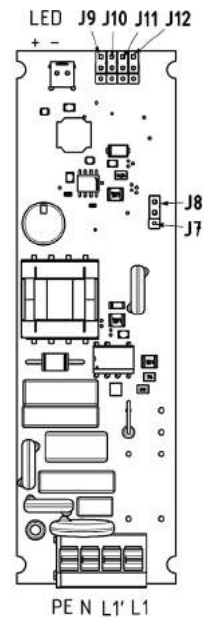
JUMPER	MAINS INPUT		Lighting Output
	L1	L1'	
J8 - CLOSE (DEFAULT SETTING)	0	0	OFF
	0	1	OFF
	1	0	100%
	1	1	DIMM

JUMPER	MAINS INPUT		Lighting Output
	L1	L2 (L1')	
J7 - CLOSE	0	0	OFF
	0	1	OFF
	1	0	DIMM
	1	1	100%

DIMM - see Dimming option

Dimming options:

JUMPERS				DIMMING LEVEL
J9	J10	J11	J12	
OPEN	OPEN	OPEN	OPEN	10%
OPEN	OPEN	OPEN	CLOSE	20%
OPEN	OPEN	CLOSE	OPEN	30%
OPEN	CLOSE	OPEN	OPEN	40%
CLOSE	OPEN	OPEN	OPEN	50%



If 230V presents on L1:
Ak je 230V prítomných na L1 :

FULL POWER
LEGEND BRIGHTNESS > 200cd/m²
JAS PIKTOGRAMU > 200cd/m²



ECO MODE 50%



ECO MODE 40%



ECO MODE 30%



ECO MODE 20%



ECO MODE 10%
LEGEND BRIGHTNESS > 2cd/m²
JAS PIKTOGRAMU > 2cd/m²

ACCESSORIES LEDLUX2-R



- Optional Accessories:**
- Wall brackets
 - Wire rope suspension set
- Príplatky:**
- nástenné konzoly
 - lankový záves

Upright wall mounting bracket
Konzola kolmo na stenu



RAL9003



RAL9006



RAL9005

Optional Item / Príplatky	Order Code / objedn.kód
Upright wall mounting bracket in white RAL9003 colour / konzola kolmo na stenu v bielej RAL9003	331-B-000-01-00-02
Upright wall mounting bracket in grey RAL9006 colour / konzola kolmo na stenu v šedej RAL9006	331-B-000-01-00-01
Upright wall mounting bracket in black RAL9005 colour / konzola kolmo na stenu v čiernej RAL9005	331-B-000-01-00-03
Wire rope suspension set 1,0m long in white RAL9003 colour / lanková závesná sada 1,0m dlhá v bielej RAL9003 farbe	85-B-05-13-01
Wire rope suspension set 1,0m long in grey RAL9006 colour / lanková závesná sada 1,0m dlhá v šedej RAL9006 farbe	85-B-05-13-00
Wire rope suspension set 1,0m long in black RAL9005 colour / lanková závesná sada 1,0m dlhá v čiernej RAL9005 farbe	85-B-05-13-02
Wire rope suspension set 1,5m long in white RAL9003 colour / lanková závesná sada 1,5m dlhá v bielej RAL9003 farbe	85-B-05-25-F1
Wire rope suspension set 1,5m long in grey RAL9006 colour / lanková závesná sada 1,5m dlhá v šedej RAL9006 farbe	85-B-05-25-00
Wire rope suspension set 2,0m long in white RAL9003 colour / lanková závesná sada 2,0m dlhá v bielej RAL9003 farbe	85-B-05-60-00
Wire rope suspension set 2,0m long in grey RAL9006 colour / lanková závesná sada 2,0m dlhá v šedej RAL9006 farbe	85-B-05-18-00
Wire rope suspension set 3,5m long in white RAL9003 colour / lanková závesná sada 3,5m dlhá v bielej RAL9003 farbe	85-B-05-26-F1
Wire rope suspension set 3,5m long in grey RAL9006 colour / lanková závesná sada 3,5m dlhá v šedej RAL9003 farbe	85-B-05-26-00
Pendant ceiling mounting bracket 1,0m in white RAL9003 colour / trubková závesná sada 1,0m dlhá v bielej RAL9003 farbe	85-B-05-27-F1
Pendant ceiling mounting bracket 1,0m in grey RAL9006 colour / trubková závesná sada 1,0m dlhá v šedej RAL9006 farbe	85-B-05-27-F17

