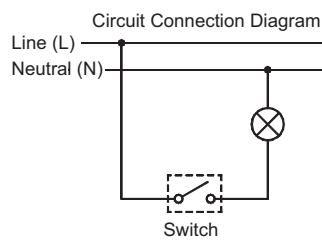
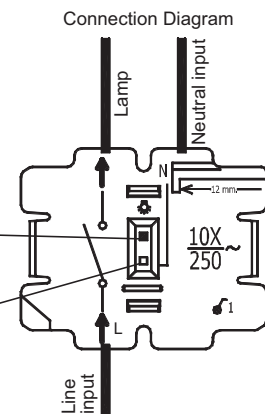


- 1) Button
- 2) Fixing part
- 3) Lighting tunnel
- 4) Frame
- 5) Base
- 6) Screw of the claw
- 7) Tumbler



The position of the switch for incandescent lamps, halogen lamps and low – voltage halogen lamps.

The position of the switch for fluorescent lamps, compact fluorescent lamps.



**Technical Features:**

- Single- pole, single- way 10AX 250V~ switch.
- 5 mA blue light and a life- span of 100.000 hours (~11 years). (LEDs)
- LEDs that can operate together with incandescent lamps, halogen lamps and low – voltage halogen lamps.
- Blue side lightings that can operate with fluorescent lamps and compact fluorescent lamps through neutral connection to the switch.

**Assembly:**

1- The position of the switch on the back cover should be selected depending on

the type of light the switch will control as shown in the connection diagram.

- The position of the switch must be "□" in order to operate the LEDs when fluorescent lamps and compact fluorescent lamps are used. (In this position, the LEDs will always light up in every position of the switch.)
- The position of the switch must be "⊗" in order to operate the LEDs when incandescent lamps, halogen lamps and low – voltage halogen lamps are used.

• If you do not want the LEDs to light up, the connection should not be done neutral and the position of the switch should be "□".

2-The cable connections should be done as shown in the connection diagram. Place the base (5) in the mounting box and tighten the screws of the claws (6) with an appropriate screwdriver.

3-Place the fixing part (2) to the frame (4). (In this position, the LEDs will always light up in every position of the switch.)

4- Put the frame on the base and fix the frame to the base by pressing on the lighting tunnels as shown in the figure (8).

5-The assembly is completed after the pins inside the button (1) are pushed into the slots on the tumbler (7).