

ALUMAX

INDUSTRIAL WATERPROOF AND DUSTPROOF
fluorescent lighting fittings
MADE OF ALUMINIUM PROFILE



Use:

Industrial indoor and outdoor areas, sports grounds, workshops, garages, agricultural buildings, warehouses. Lighting fittings are resistant to dust, damp and jetting water also in corrosive environment.

Description, optics:

The luminaire **body** is made of aluminium profile. The end caps closing the profile are produced of aluminum alloy.

The **reflector** is produced of polished aluminium and enables to regulate the luminous flux.

The **optic cover** is made of hardened safety glass. It is fixed to the body with stainless steel clips. The IP protection is provided with a silicone rubber. The glass cover is locked in side holders. They can be opened together with glass during the replacement of fluorescent tubes. The luminaire is fitted with brass Pg 13,5 cable gland.

Installation:

- on sliding suspensions, which are placed in the body groove.



IP65



230 V
50 Hz



Ø 26
G 13

1-2,5 mm²

1105 °C

45 °C

METAL
960 °C

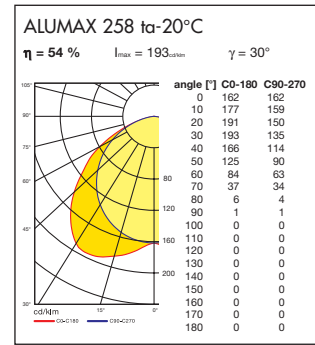
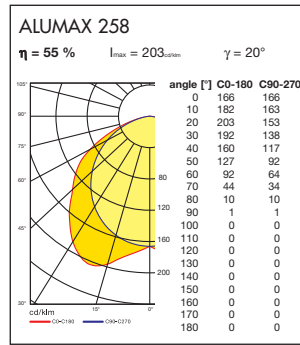
1F

3F

VVG

EVG

EVG DIMM



Order code	Type	Light sources		Luminous efficiency	Net weight	Dimensions				
		W		%		A	B	C	D	
basic HPF wired modification										
					kg	mm				max.
44211	ALUMAX 118 K	1x18	T8/G13	58	3,2	670	140	90	580	
44221	ALUMAX 136 K	1x36	T8/G13	57	4,6	1282	140	90	1192	
44231	ALUMAX 158 K	1x58	T8/G13	57	6,8	1582	140	90	1492	
44241	ALUMAX 218 K	2x18	T8/G13	56	3,4	670	140	90	580	
44251	ALUMAX 236 K	2x36	T8/G13	56	4,9	1282	140	90	1192	
44261	ALUMAX 258 K	2x58	T8/G13	55	7,4	1582	140	90	1492	
modification with electronic ballast										
						mm				max.
44215	ALUMAX 118 E	1x18	T8/G13	58	2,8	670	140	90	580	
44225	ALUMAX 136 E	1x36	T8/G13	57	3,9	1282	140	90	1192	
44235	ALUMAX 158 E	1x58	T8/G13	57	5,8	1582	140	90	1492	
44225	ALUMAX 218 E	2x18	T8/G13	56	3,0	670	140	90	580	
44255	ALUMAX 236 E	2x36	T8/G13	56	4,1	1282	140	90	1192	
44265	ALUMAX 258 E	2x58	T8/G13	55	6,1	1582	140	90	1492	

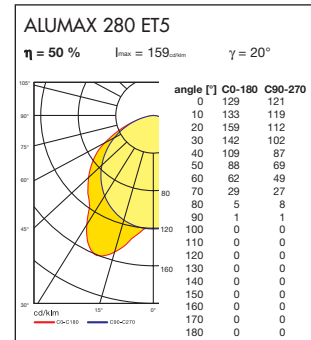
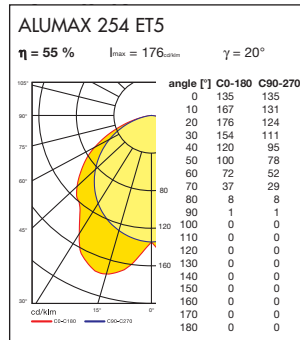
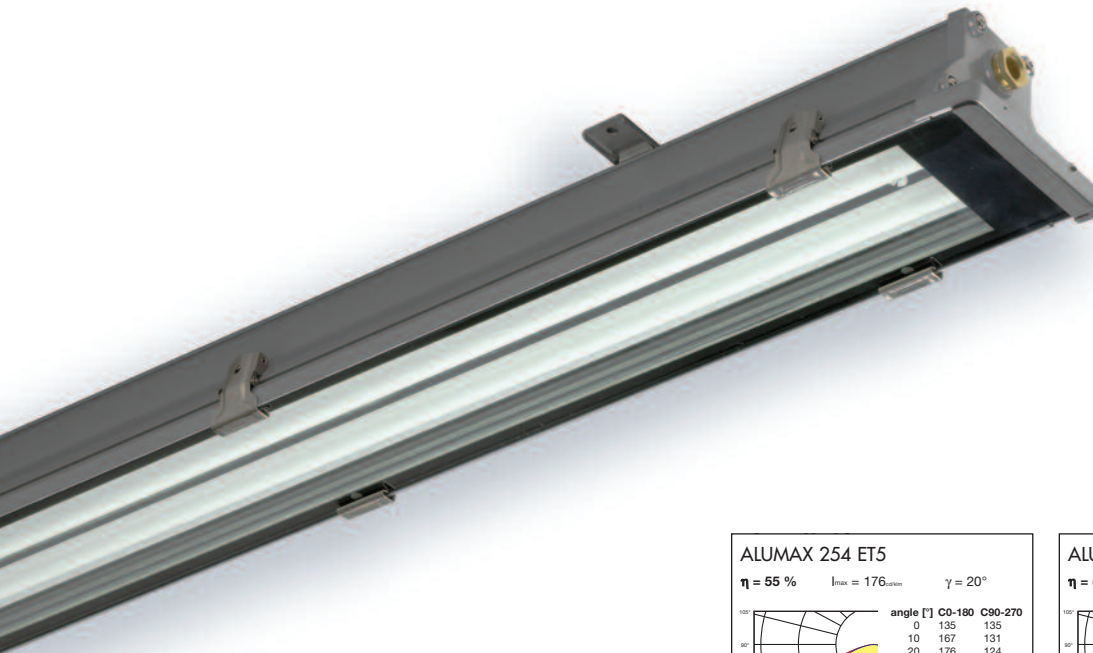
spacing for fixing E = 135 mm

442x7 modification with dimmable electronic ballast (ER=DIM)

442x8 modification with maintained 1hr emergency unit (M1h)



ALUMAX T5



Order code	Type	Light sources	Luminous efficiency	Net weight	Dimensions			
		W	%		A	B	C	D
with T5 electronic ballast – high efficiency range								max.
44510	ALUMAX 114 ET5	1x14	T5/G5 60	2,4	624	105	75	534
44520	ALUMAX 128 ET5	1x28	T5/G5 59	3,3	1224	105	75	1134
44530	ALUMAX 135 ET5	1x35	T5/G5 57	4,6	1524	105	75	1434
44540	ALUMAX 214 ET5	2x14	T5/G5 56	2,5	624	105	75	534
44550	ALUMAX 228 ET5	2x28	T5/G5 54	3,4	1224	105	75	1134
44560	ALUMAX 235 ET5	2x35	T5/G5 53	4,7	1524	105	75	1434
with T5 electronic ballast – high output range								max.
44515	ALUMAX 124 ET5	1x24	T5/G5 60	2,4	624	105	75	534
44525	ALUMAX 154 ET5	1x54	T5/G5 59	3,3	1224	105	75	1134
44535	ALUMAX 180 ET5	1x80	T5/G5 57	4,6	1524	105	75	1434
44575	ALUMAX 149 ET5	1x49	T5/G5 57	4,6	1524	105	75	1434
44545	ALUMAX 224 ET5	2x24	T5/G5 56	2,5	624	105	75	534
44555	ALUMAX 254 ET5	2x54	T5/G5 54	3,4	1224	105	75	1134
44565	ALUMAX 280 ET5	2x80	T5/G5 53	4,7	1524	105	75	1434
44585	ALUMAX 249 ET5	2x49	T5/G5 53	4,7	1524	105	75	1434

spacing for fixing E = 135 mm
 445x7 modification with dimmable electronic ballast T5 (ERT5=DIM)

