

SM T5



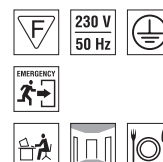
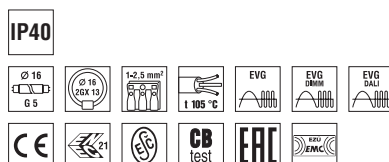
... indoor fluorescent light fitting.

USE

The light fitting is suitable for offices, hallways, school interiors, libraries, lecture rooms, sanitary rooms, hospitals and passenger terminals.

ADVANTAGES

- Light fitting protection **IP40**
- Diffuser: opalized acrylate with smooth surface (OP) or transparent with lenticular pattern (KR)
- Up to 10 % lower electricity consumption when compared to electronic ballast T8
- Up to 40 % lower electricity consumption when compared to inductive ballast T8
- Up to 80 % lower electricity consumption in DALI, DIM version when compared to inductive ballast T8
- Up to 14 % higher luminous efficiency when compared to fluorescent light fittings T8
- Maximum luminous flux of the light fitting T5 is achieved at 35 °C (T8 at 25 °C)
- It can be delivered in dimmable or emergency version
- Plain light fitting with timeless design
- Certification: ESC, ENEC, CB and EAC

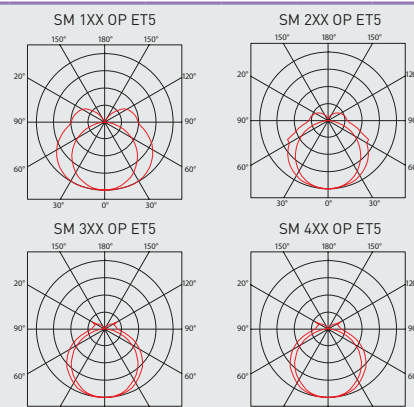


SM T5 OP



TECHNICAL DESCRIPTION

- Diffuser: opalized acrylate (OP), smooth surface, UV stable
- Body (Reflector): steel sheet, white colour (RAL 9003)
- Cable gland: white, rubber
- Clip: polyamide (PA), white colour, rotary
- Terminal block: screwless, three-poles
- Electric equipment: electronic ballast T5; T5 intelligent; T5 DALI or T5 DIM
- Light fitting protection: IP40



Code	Type	Light sources [W]	Luminous flux [lm]*	Light fitting efficiency [%]	Net weight [kg]	A [mm]	C [mm]	D [mm]	E [mm]
Diffuser without pattern (smooth) made of opalized acrylate (OP) - electronic ballast HE (effective line) - T5/G5									
31010	SM 114 OP ET5	1x14	1350*	69	0.7	665	110	450	-
31020	SM 128 OP ET5	1x28	2900*	69	1.4	1270	110	750	-
31030	SM 135 OP ET5	1x35	3650*	69	1.8	1570	110	900	-
31040	SM 214 OP ET5	2x14	2700*	61	1.4	665	195	510	130
31050	SM 228 OP ET5	2x28	5800*	61	2.4	1270	195	810	130
31060	SM 235 OP ET5	2x35	7300*	61	2.7	1570	195	960	130
31080	SM 328 OP ET5	3x28	8700*	54	4.2	1270	295	900	200
31070	SM 414 OP ET5	4x14	5400*	70	3.7	665	665	385	410
Diffuser without pattern (smooth) made of opalized acrylate (OP) - electronic ballast HO (performance line) - T5/G5									
31011	SM 124 OP ET5	1x24	2000*	69	0.7	665	110	450	-
31021	SM 154 OP ET5	1x54	5000*	69	1.4	1270	110	750	-
31041	SM 149 OP ET5	1x49	4900*	69	1.8	1570	110	900	-
31031	SM 180 OP ET5	1x80	7000*	69	1.8	1570	110	900	-
31051	SM 224 OP ET5	2x24	4000*	61	1.4	665	195	510	130
31061	SM 254 OP ET5	2x54	10000*	61	2.4	1270	195	810	130
31081	SM 249 OP ET5	2x49	9800*	61	2.7	1570	195	960	130
31071	SM 280 OP ET5	2x80	14000*	61	2.7	1570	195	960	130
31091	SM 424 OP ET5	4x24	8000*	70	3.7	665	665	385	410
Diffuser without pattern (smooth) made of opalized acrylate (OP) - electronic ballast - T5 FC/2Gx13									
12510	SM 122 OP ET5	1x22	1900**	61	0.8	275	275	170	170
Diffuser with lenticular pattern made of opalized acrylate (VROP) - electronic ballast - T5 FC/2Gx13									
12523	SM 140 VROP ET5	1x40	3400**	61	1.7	400	400	240	240
12533	SM 155 VROP ET5	1x55	4200**	61	1.7	400	400	240	240
12543	SM 162 VROP ET5	1x22+1x40	5300**	75	1.8	400	400	240	240

* - total luminous flux of the light fitting with T5/840 sources at the temperature of * 35 °C /** 25 °C

SM T5 OP

Diffuser without pattern (smooth) made of opalized acrylate (OP), electronic ballast T5

Code	Type	M1h	M3h	ERT5 DIM	ERT5 DIM M1h	ERT5 DIM M3h	ERT5 DALI	ERT5 DALI M1h	ERT5 DALI M3h
31010	SM 114 OP ET5	x	x	x	x	x	x	x	x
31020	SM 128 OP ET5	31026	x	31022	31028	x	31024	31226	x
31030	SM 135 OP ET5	31036	x	31032	31038	x	31034	31236	x
31040	SM 214 OP ET5	x	x	31042	x	x	31044	x	x
31050	SM 228 OP ET5	31056	31006	31052	31058	31008	31054	31256	31206
31060	SM 235 OP ET5	31066	31016	31062	31068	31018	31064	31266	31216
31080	SM 328 OP ET5	31086	x	31082	31088	x	31084	31286	x
31070	SM 414 OP ET5	31076	31096	31072	31078	31098	31074	31276	31296
31011	SM 124 OP ET5	x	x	x	x	x	x	x	x
31021	SM 154 OP ET5	31027	x	31023	31029	x	31025	31227	x
31041	SM 149 OP ET5	31047	x	31043	31049	x	31045	31247	x
31031	SM 180 OP ET5	31037	x	31033	31039	x	31035	31237	x
31051	SM 224 OP ET5	x	x	31053	x	x	31055	x	x
31061	SM 254 OP ET5	31067	x	31063	31069	x	31065	31267	x
31081	SM 249 OP ET5	31087	31017	31083	31089	x	31085	31287	x
31071	SM 280 OP ET5	31077	x	31073	31079	x	31075	31277	x
31091	SM 424 OP ET5	31097	x	31093	31099	x	31095	31297	x
12510	SM 122 OP ET5	x	x	x	x	x	x	x	x

SM T5 VROP

Diffuser with lenticular pattern made of opalized acrylate (VROP), electronic ballast T5

12523	SM 140 VROP ET5	31203	x	31223	31253	x	31225	31255	x
12533	SM 155 VROP ET5	31213	x	31233	31263	x	31235	31265	x
12543	SM 162 VROP ET5	x	x	31243	x	x	31245	x	x

Example of type marking: 31083 = SM 249 OP **ERT5 DIM**

LEGEND

- OP** – opalized diffuser with smooth surface
- VROP** – opalized diffuser with lenticular pattern
- DALI** – version with electronic digital dimmable ballast controlled by DALI protocol
- DIM** – version with electronic analogue dimmable ballast 1-10 V

- M1h** – emergency back-up source with operating time of 1 hour (SA) for both permanent and emergency illumination
- M3h** – emergency back-up source with operating time of 3 hours (SA) for both permanent and emergency illumination

Batteries must be formatted before their putting into operation. Assembly instructions must be observed at installation.

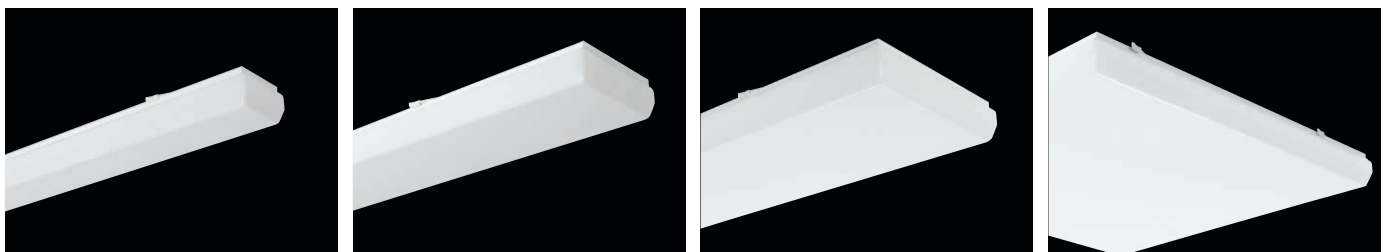
LIGHT FITTING ATTACHMENT

Directly to a ceiling or a wall with the use of screws



LIGHT FITTING DETAILED VIEW

SM T5 OP



SM T5 VROP

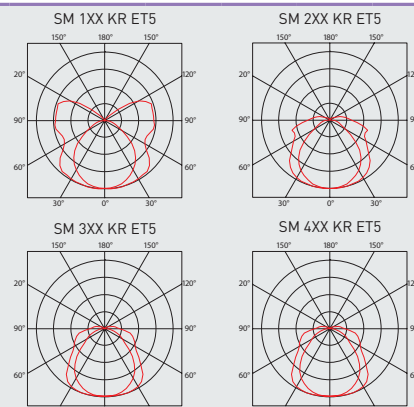


SM T5 KR



TECHNICAL DESCRIPTION

- Diffuser: transparent acrylate (KR), lenticular surface, UV stable, excellent optical characteristics
- Body (Reflector): steel sheet, white colour (RAL 9003)
- Cable gland: white, rubber
- Clip: polyamide (PA), white colour, rotary
- Terminal block: screwless, three-poles (basic version)
- Electric equipment: electronic ballast T5; T5 intelligent; T5 DALI or T5 DIM
- Light fitting protection: IP40



Code	Type	Light sources [W]	Luminous flux [lm]*	Light fitting efficiency [%]	Net weight [kg]	A [mm]	C [mm]	D [mm]	E [mm]
Diffuser with lenticular pattern made of transparent acrylate (KR) - electronic ballast HE (effective line) - T5/G5									
31110	SM 114 KR ET5	1x14	1350*	83	0.7	665	110	450	-
31120	SM 128 KR ET5	1x28	2900*	83	1.4	1270	110	750	-
31130	SM 135 KR ET5	1x35	3650*	83	1.8	1570	110	900	-
31140	SM 214 KR ET5	2x14	2700*	69	1.4	665	195	510	130
31150	SM 228 KR ET5	2x28	5800*	69	2.4	1270	195	810	130
31160	SM 235 KR ET5	2x35	7300*	69	2.7	1570	195	960	130
31180	SM 328 KR ET5	3x28	8700*	69	4.2	1270	295	900	200
31170	SM 414 KR ET5	4x14	5400*	84	3.7	665	665	385	410
Diffuser with lenticular pattern made of transparent acrylate (KR) - electronic ballast HO (performance line) - T5/G5									
31111	SM 124 KR ET5	1x24	2000*	83	0.7	665	110	450	-
31121	SM 154 KR ET5	1x54	5000*	83	1.4	1270	110	750	-
31141	SM 149 KR ET5	1x49	4900*	83	1.8	1570	110	900	-
31131	SM 180 KR ET5	1x80	7000*	83	1.8	1570	110	900	-
31151	SM 224 KR ET5	2x24	4000*	69	1.4	665	195	510	130
31161	SM 254 KR ET5	2x54	10000*	69	2.4	1270	195	810	130
31181	SM 249 KR ET5	2x49	9800*	69	2.7	1570	195	960	130
31171	SM 280 KR ET5	2x80	14000*	69	2.7	1570	195	960	130
31191	SM 424 KR ET5	4x24	8000*	84	3.7	665	665	385	410
Diffuser with lenticular pattern made of transparent acrylate (KR) - electronic ballast - T5 FC/2Gx13									
12511	SM 122 KR ET5	1x22	1900**	82	0.8	275	275	170	170
12521	SM 140 KR ET5	1x40	3400**	82	1.7	400	400	240	240
12531	SM 155 KR ET5	1x55	4200**	73	1.7	400	400	240	240
12541	SM 162 KR ET5	1x22+1x40	5300**	75	1.8	400	400	240	240

* - total luminous flux of the light fitting with T5/840 sources at the temperature of * 35 °C /** 25 °C

SM T5 KR

Diffuser with lenticular pattern made of transparent acrylate (KR), electronic ballast T5

Code	Type	M1h	M3h	ERT5 DIM	ERT5 DIM M1h	ERT5 DIM M3h	ERT5 DALI	ERT5 DALI M1h	ERT5 DALI M3h
31110	SM 114 KR ET5	x	x	x	x	x	x	x	x
31120	SM 128 KR ET5	31126	x	31122	31128	x	31124	31228	x
31130	SM 135 KR ET5	31136	x	31132	31138	x	31134	31238	x
31140	SM 214 KR ET5	x	x	31142	x	x	31144	x	x
31150	SM 228 KR ET5	31156	31106	31152	31158	31108	31154	31258	31208
31160	SM 235 KR ET5	31166	31116	31162	31168	31118	31164	31268	31218
31180	SM 328 KR ET5	31186	x	31182	31188	x	31184	31288	x
31170	SM 414 KR ET5	31176	31196	31172	31178	31198	31174	31278	31298
31111	SM 124 KR ET5	x	x	x	x	x	x	x	x
31121	SM 154 KR ET5	31127	x	31123	31129	x	31125	31229	x
31141	SM 149 KR ET5	31147	x	31143	31149	x	31145	31249	x
31131	SM 180 KR ET5	31137	x	31133	31139	x	31135	31239	x
31151	SM 224 KR ET5	x	x	31153	x	x	31155	x	x
31161	SM 254 KR ET5	31167	x	31163	31169	x	31165	31269	x
31181	SM 249 KR ET5	31187	31117	31183	31189	x	31185	31289	x
31171	SM 280 KR ET5	31177	x	31173	31179	x	31175	31279	x
31191	SM 424 KR ET5	31197	x	31193	31199	x	31195	31299	x
12511	SM 122 KR ET5	x	x	x	x	x	x	x	x
12521	SM 140 KR ET5	31202	x	31222	31252	x	31224	31254	x
12531	SM 155 KR ET5	31212	x	31232	31262	x	31234	31264	x
12541	SM 162 KR ET5	x	x	31242	x	x	31244	x	x

Example of type marking: 31183 = SM 249 KR **ERT5 DIM**

LEGEND

DALI – version with electronic digital dimmable ballast controlled by DALI protocol

DIM – version with electronic analogue dimmable ballast 1-10 V

M1h – emergency back-up source with operating time of 1 hour (SA) for both permanent and emergency illumination

M3h – emergency back-up source with operating time of 3 hours (SA) for both permanent and emergency illumination

Batteries must be formatted before their putting into operation. Assembly instructions must be observed at installation.

LIGHT FITTING ATTACHMENT

Directly to a ceiling or a wall with the use of screws



LIGHT FITTING DETAILED VIEW

SM T5 KR

