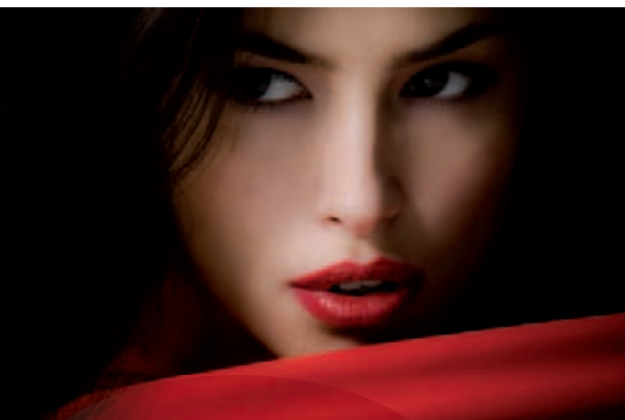


# ego

design **Mario Maccarini** - 2009



Sistema di plafoniere in linea a tre o sei elementi che possono essere collegate in sequenza continua permettendo di illuminare, incorniciare e sottolineare grandi superfici. Particolarmente adatti per makeup room, dove possono essere intervallate da specchi in vetro.

Light fitting system with three or six inline elements that can be connected in continuous sequence so as to illuminate, frame and underline large surfaces. Particularly suitable for make-up rooms where they can be alternated with glass mirrors.

Système de plafonniers alignés à trois ou six éléments qui peuvent être raccordés en séquence continue permettant d'éclairer, d'encadrer et de souligner de grandes surfaces. Particulièrement adaptés pour la salle de maquillage où ils peuvent s'alterner avec des miroirs en verre.

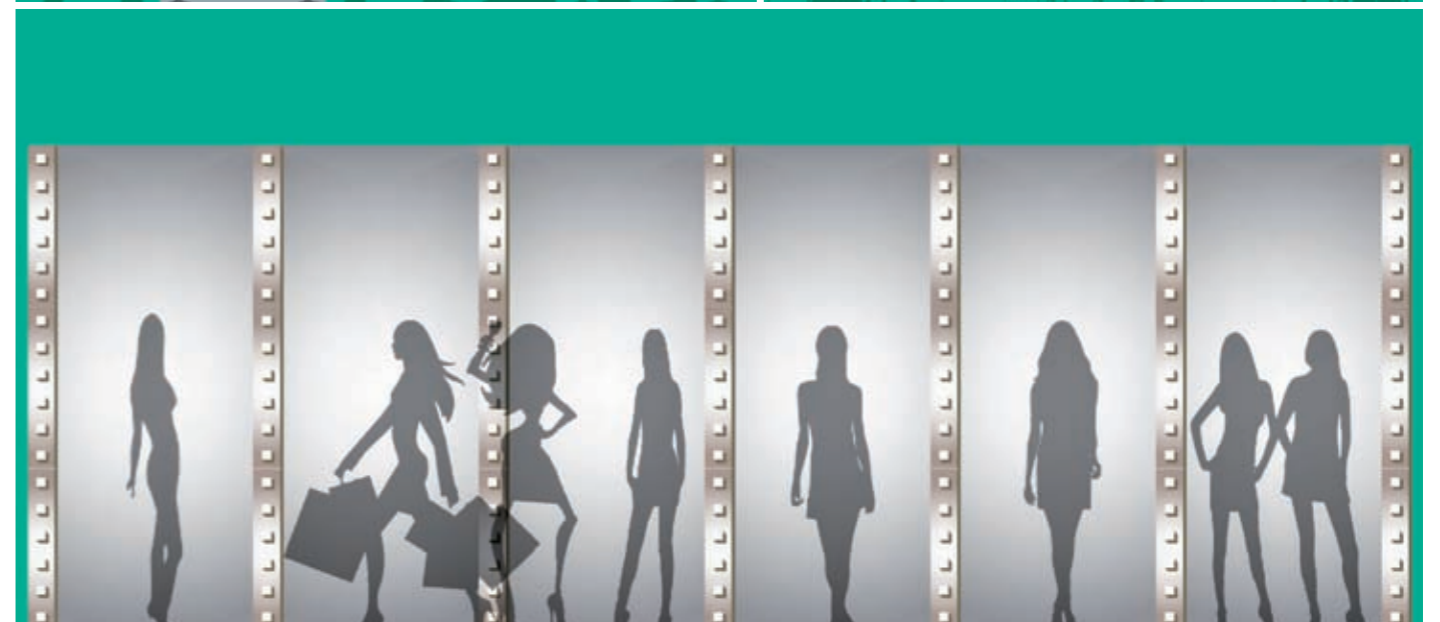
Wandleuchtensystem mit drei oder sechs Elementen, die unmittelbar aufeinanderfolgend miteinander verbunden werden können und somit die Beleuchtung, Einrahmung und Betonung großer Flächen erlauben. Besonders für Schminkzimmer geeignet, wo sie abwechselnd mit Glasspiegeln installiert werden können.

Sistema de lámparas de techo en línea de tres o seis elementos que pueden conectarse en secuencia continua permitiendo alumbrar, enmarcar y subrayar grandes superficies. Muy apropiadas para salas de maquillaje, donde se pueden colocar con espejos de cristal intercalados.





	<p>modulo spazio/space module</p>																		
<p><b>EGO LINEARE 45X15</b></p>	<table border="1"> <thead> <tr> <th>CODE</th> <th>DESCRIPTION</th> <th>NOTES</th> <th>KG/LBS</th> </tr> </thead> <tbody> <tr> <td><b>536110IN</b> <b>536110IS</b></td> <td>modulo spazio/space module</td> <td></td> <td><b>1,94/4,3</b></td> </tr> <tr> <td><b>536070IN</b> <b>536070IS</b></td> <td>diffusore tondo/round diffuser</td> <td>1 x 36W </td> <td><b>2,41/5,3</b></td> </tr> <tr> <td><b>536080IN</b> <b>536080IS</b></td> <td>diffusore quadro/square diffuser</td> <td><b>108380XX</b> FL FSD 36W 230V 2G11 TC-L </td> <td><b>2,39/5,3</b></td> </tr> </tbody> </table>	CODE	DESCRIPTION	NOTES	KG/LBS	<b>536110IN</b> <b>536110IS</b>	modulo spazio/space module		<b>1,94/4,3</b>	<b>536070IN</b> <b>536070IS</b>	diffusore tondo/round diffuser	1 x 36W 	<b>2,41/5,3</b>	<b>536080IN</b> <b>536080IS</b>	diffusore quadro/square diffuser	<b>108380XX</b> FL FSD 36W 230V 2G11 TC-L 	<b>2,39/5,3</b>		
CODE	DESCRIPTION	NOTES	KG/LBS																
<b>536110IN</b> <b>536110IS</b>	modulo spazio/space module		<b>1,94/4,3</b>																
<b>536070IN</b> <b>536070IS</b>	diffusore tondo/round diffuser	1 x 36W 	<b>2,41/5,3</b>																
<b>536080IN</b> <b>536080IS</b>	diffusore quadro/square diffuser	<b>108380XX</b> FL FSD 36W 230V 2G11 TC-L 	<b>2,39/5,3</b>																
	<p>modulo spazio/space module</p>																		
<p><b>EGO LINEARE 90X15</b></p>	<table border="1"> <thead> <tr> <th>CODE</th> <th>DESCRIPTION</th> <th>NOTES</th> <th>KG/LBS</th> </tr> </thead> <tbody> <tr> <td><b>536120IN</b> <b>536120IS</b></td> <td>modulo spazio/space module</td> <td></td> <td><b>3,63/8</b></td> </tr> <tr> <td><b>536090IN</b> <b>536090IS</b></td> <td>diffusore tondo/round diffuser</td> <td>2 x 36W </td> <td><b>4,38/9,7</b></td> </tr> <tr> <td><b>536100IN</b> <b>536100IS</b></td> <td>diffusore quadro/square diffuser</td> <td><b>108380XX</b> FL FSD 36W 230V 2G11 TC-L </td> <td><b>4,61/10,2</b></td> </tr> </tbody> </table>	CODE	DESCRIPTION	NOTES	KG/LBS	<b>536120IN</b> <b>536120IS</b>	modulo spazio/space module		<b>3,63/8</b>	<b>536090IN</b> <b>536090IS</b>	diffusore tondo/round diffuser	2 x 36W 	<b>4,38/9,7</b>	<b>536100IN</b> <b>536100IS</b>	diffusore quadro/square diffuser	<b>108380XX</b> FL FSD 36W 230V 2G11 TC-L 	<b>4,61/10,2</b>		
CODE	DESCRIPTION	NOTES	KG/LBS																
<b>536120IN</b> <b>536120IS</b>	modulo spazio/space module		<b>3,63/8</b>																
<b>536090IN</b> <b>536090IS</b>	diffusore tondo/round diffuser	2 x 36W 	<b>4,38/9,7</b>																
<b>536100IN</b> <b>536100IS</b>	diffusore quadro/square diffuser	<b>108380XX</b> FL FSD 36W 230V 2G11 TC-L 	<b>4,61/10,2</b>																
<p>IN IS</p>		<p>ES EL </p>		<p>CE  IP20</p>															







**EGO** oggetto che nasce dall'idea di riproporre i vecchi specchi da camerino, back stage dei teatri, utilizzati per il trucco e qui rielaborato per adattarsi a tante nuove reinterpretazioni. La fonte luminosa è posta direttamente dietro alla lastra d' acciaio specchiante e viene diffusa da elementi in metacrilato che eliminano il problema del surriscaldamento delle vecchie lampadine ad incandescenza, diffondendo la luce in modo uniforme, e poco contrastata. Il risultato è una plafoniera a risparmio energetico quadrata o rettangolare in acciaio specchiante completa di elementi diffusori di luce in metacrilato traslucido di forma cilindrica o cubica.

**EGO** based on the idea to re-present old theatre dressing room and back stage mirrors, used for make-up and here revised to adapt to lots of new proposals. The light source is positioned directly behind the steel mirror plate and is diffused by methacrylate elements thus eliminating the overheating problem of old incandescence bulbs, spreading the light in a uniform and low-contrast way. The result is a square or rectangular energy-saving light fitting in mirror steel complete with cylindrical or cube-shaped light diffuser elements in translucent methacrylate.

**EGO** objet qui naît de l'idée de proposer à nouveau les anciens miroirs de loge, des coulisses des théâtres, utilisés pour le maquillage et ici réélaborés pour s'adapter à de nombreuses nouvelles réinterprétations. La source lumineuse est située directement derrière la plaque d'acier poli et elle est diffusée par des éléments en méthacrylate qui éliminent le problème de surchauffe des anciennes ampoules à incandescence, en diffusant la lumière de manière uniforme, et peu contrastée. Le résultat est un plafonnier à économie d'énergie carré ou rectangulaire en acier poli avec des éléments diffuseurs de lumière en méthacrylate translucide de forme cylindrique ou cubique.

**EGO** aus der Idee entstanden, die alten zum Schminken benutzten Spiegel aus den Garderobenzimmern der Theater neu zu bearbeiten, um sie an zahlreiche Neuinterpretationen anzupassen. Die Lichtquelle wurde direkt auf den Spiegelstahl verbracht. Die Elemente aus Methacrylat beseitigen das Problem der Überhitzung der alten Glühlampen und verteilen das Licht gleichmäßig und fast ohne Behinderung. Das Ergebnis ist eine quadratische oder rechteckige Energiespar-Wandleuchte aus Spiegelstahl mit zylindrischen oder kubischen Diffusoren aus durchscheinendem Methacrylat.

**EGO** objeto que nace de la idea de reproponer los viejos espejos de camerino, las bambalinas de los teatros, que se utilizan para el maquillaje, y que aquí se reelabora para adaptarse a reinterpretaciones nuevas. La fuente de luz está colocada directamente detrás de la placa de acero bruñido a espejo y se difunde por medio de elementos de metacrilato que eliminan el problema del sobrecalentamiento de las viejas bombillas incandescentes y difunden la luz de manera uniforme y poco contrastada. El resultado es una lámpara de techo de ahorro energético, cuadrada o rectangular, de acero bruñido a espejo con elementos difusores de luz de metacrilato translúcido de forma cilíndrica o cúbica.

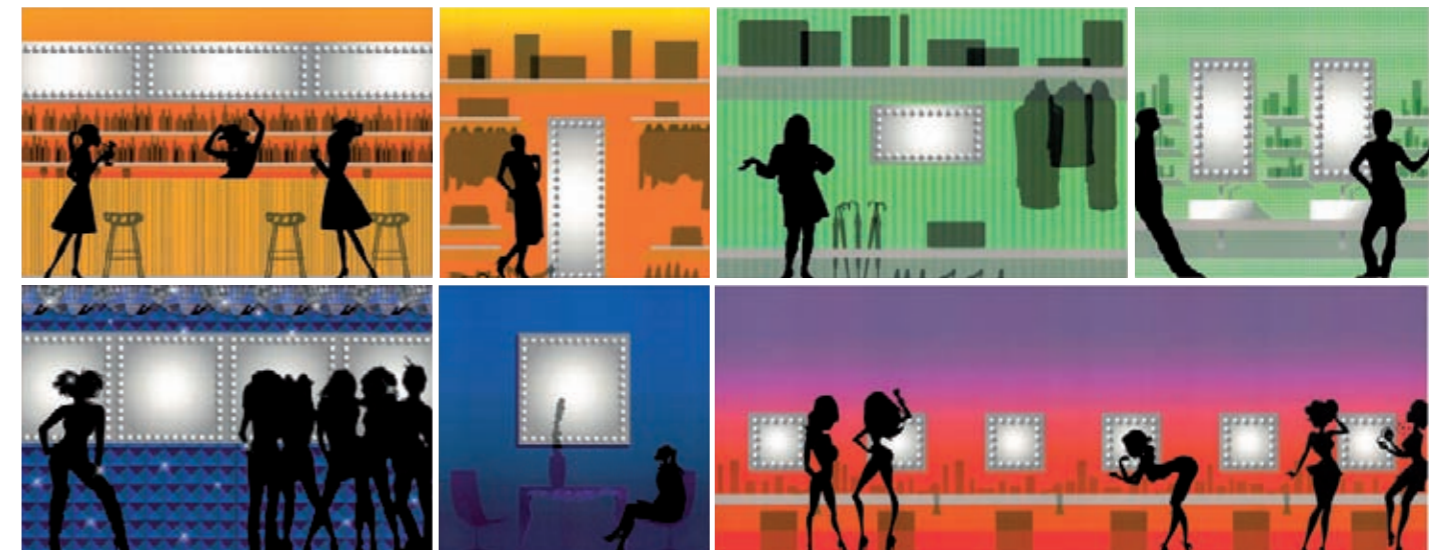
Lampada fluorescente da parete e soffitto.  
Struttura in acciaio verniciato.  
Frontale in acciaio inox specchio con diffusori in metacrilato.  
Versioni con diffusore tondo o diffusore quadrato in tre dimensioni: 54x54, 105x60 e 150x60 cm.

Wall-ceiling fluorescent lamp.  
Painted steel frame.  
Super mirror inox front side with methacrylate diffuser.  
Round or square diffuser version available in three sizes: 54x54, 105x60 and 150x60 cm.

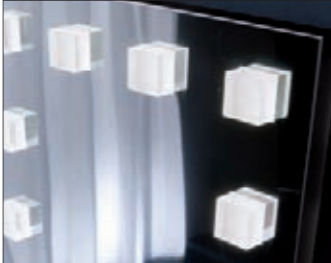
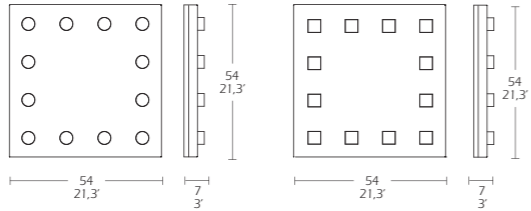

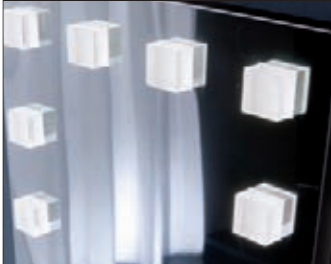
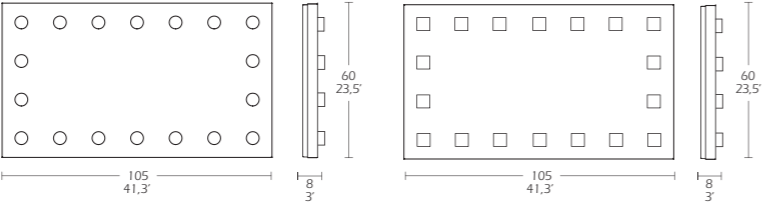



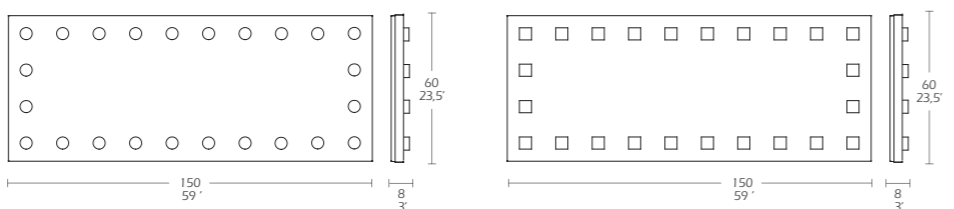


Applique ou plafonnier fluorescente.  
Structure en acier verni.  
Section frontale en acier inox à glace.  
Avec diffuseurs en methacrylate.  
Version avec diffuseurs rond ou carré en trois dimensions: 54x54, 105x60 et 150x60 cm.

Fluoreszent Wand-Deckenleuchte Aufbau aus lackiertem Stahl.  
Frontal-Seite aus Stahl inox Spiegel mit Methacrylat Diffusoren.  
Version mit rund oder viereckig Diffusoren in drei Dimensionen: 54x54, 105x60 und 150x60 cm.

Lámpara fluorescente de pared y de techo. Estructura de acero pintado.  
Parte frontal de acero inoxidable bruñido a espejo con difusores de metacrilato.  
Versiones con difusor redondo o difusor cuadrado de tres dimensiones: 54x54, 105x60 y 150x60 cm.





				
<b>EGO 54x54</b>	<b>CODE</b>	<b>DESCRIPTION</b>	<b>NOTES</b>	<b>KG/LBS</b>
	<b>536010IM</b> <b>536020IM</b>	diffusore tondo/round diffuser diffusore quadro/square diffuser	4 x 36W  <b>108380XX</b> FL FSD 36W 230V 2G11 TC-L	<b>10,4/22,9</b>
				
<b>EGO 105x60</b>	<b>CODE</b>	<b>DESCRIPTION</b>	<b>NOTES</b>	<b>KG/LBS</b>
	<b>536030IM</b> <b>536040IM</b>	diffusore tondo/round diffuser diffusore quadro/square diffuser	 6 x 36W  <b>108380XX</b> FL FSD 36W 230V 2G11 TC-L	<b>29/63,9</b>
				
<b>EGO 150x60</b>	<b>CODE</b>	<b>DESCRIPTION</b>	<b>NOTES</b>	<b>KG/LBS</b>
	<b>536050IM</b> <b>536060IM</b>	diffusore tondo/round diffuser diffusore quadro/square diffuser	 8 x 36W  <b>108380XX</b> FL FSD 36W 230V 2G11 TC-L	<b>42/92,6</b>
