

# pistillo

design **Studio Tetrarch** - 1970



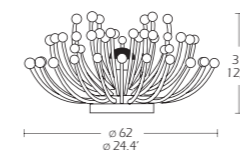
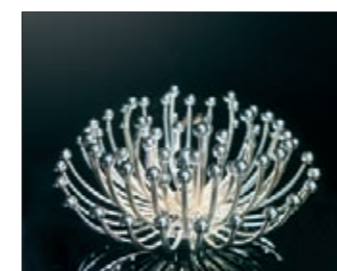
Elemento luminoso da parete, tavolo e soffitto in resina termoresistente metallizzata, cromo o dorata.

Table, wall and ceiling lamp in heat resistant resin metallized, chromed or golden.

Lampe de table, applique et plafon en résine synthétique thermorésistant métallisé, chromé ou doré.

Tisch-Wand und Deckenleuchte aus waermebestaendigem metallisiertem Kunstharz, verchromt oder vergoldet.

Elemento luminoso de pared, mesa y techo, de resinas termoresistentes metalizadas, cromada y dorada.



PISTILLO	CODE	DESCRIPTION	NOTES	KG/LBS
	100160CR	1 x 100W	312020CR INC IRA 100W 230V E27 + cupola cromata/chromed crown 112390ES ALO HSGSA 70W 230V E27 ES	3,5/7,7
1005700R	1 x 100W	+ cupola dorata/golden crown 112390ES ALO HSGSA 70W 230V E27 ES		

CR OR

ES

CE IP20





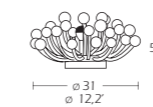
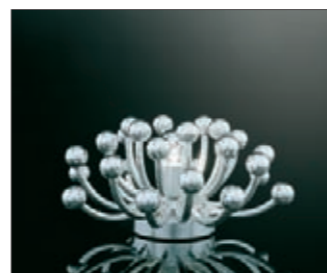
Elemento luminoso da parete, tavolo e soffitto, in resina termoresistente metallizzata, cromo o dorata.

Table, wall and ceiling lamp in heat resistant resin metallized, chromed or golden.

Lampe de table, applique et plafon en résine synthétique thermorésistant métallisé, chromé ou doré.

Tisch-Wand und Deckenleuchte aus waermebestaendigem metallisiertem Kunstharz, verchromt oder vergoldet.

Elemento luminoso de pared, mesa y techo, de resinas termoresistentes metalizadas, cromada y dorada.



PISTILLINO	CODE	DESCRIPTION	NOTES	KG/LBS
	102000CR	1 x 40W	 312010CR INC IRP 40W 230V E14	1,88/1,9
	102000OR	1 x 40W	 312010OR INC IRP 40W 230V E14	

CR OR



CE IP20